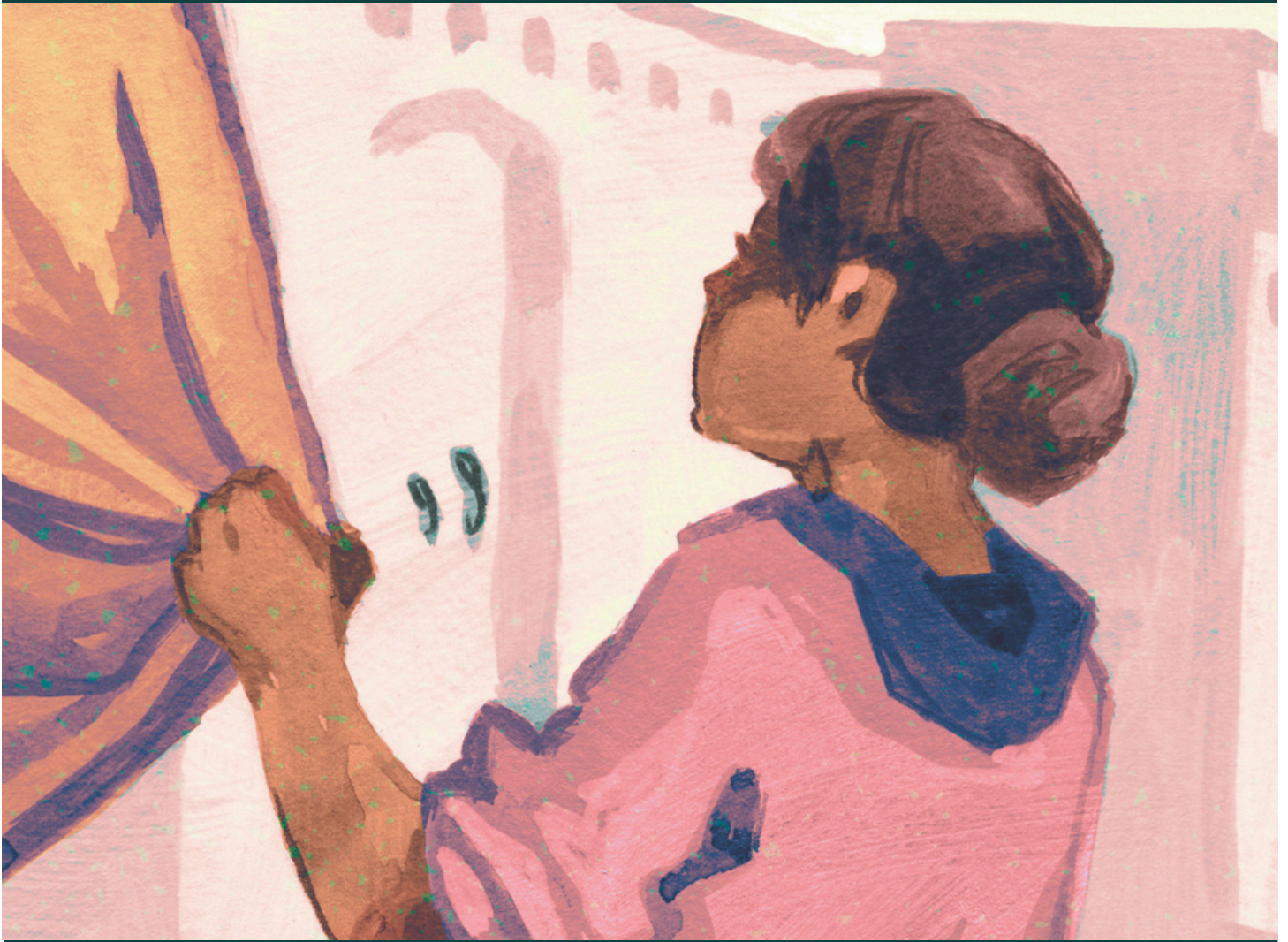


Saint Paul the Apostle Catholic Community

29th Sunday in Ordinary Time

October 19, 2025



Wherever you are on your faith journey, you are welcome here!

Parish Office Hours:

Mon. - Fri. 9:00a-5:00p
Sat. 9:00a-1:00p
Sun. Closed



www.sp-apostle.org



[StPaultheApostleMedia](https://www.youtube.com/StPaultheApostleMedia)



[@spapostle](https://www.facebook.com/espapostle)



[@saintpaulsla](https://www.instagram.com/saintpaulsla)

MASS TIMES

Mon. - Fri. 7:00a & 5:30p
Sat. 8:30a & 5:00p
Sun. 7:30a, 9:30a, 11:30a, 5:00p

Parish Office:

1536 Selby Ave.
Los Angeles, CA
90024

Parish Office Contact:

310-474-1527
parishoffice@sp-apostle.org

Church:

10750 Ohio Ave.
Los Angeles, CA
90024

St. Paul the Apostle School

Schedule a
tour!



Jill O'Callahan
Director of Admissions

jocallahan@sp-apostle.org
310-474-1588 ext. 7220



1536 Selby Ave., Los Angeles, CA, 90024

<https://school.sp-apostle.org/>

Learning Expectations:

Spirit Filled

*People for
Others*

*Academic
Achievers*

Saint Paul the Apostle Catholic Community Directory

Rev. Gilbert Martinez, CSP, Pastor
424-832-5160 gmartinez@sp-apostle.org

Fintan Hiney, Director of Marketing & Communication
424-832-5153 fhiney@sp-apostle.org

Jennifer Kozakowski, Confirmation/Altar Server Coordinator
jkozakowski@sp-apostle.org

Michelle O'Donnell, Director of Religious Education
424-832-5154 modonnell@sp-apostle.org

Manuel Pacheco, Director of Maintenance
mpacheco@sp-apostle.org

Tami Georgeff, Administrative Assistant
tgeorgeff@sp-apostle.org

Dr. Joe Reiken, School Principal
310-474-1588 principalesp-apostle.org

Rev. Mark Villano, CSP, Associate Pastor
424-832-5155 mvillano@sp-apostle.org

Lois Massey, Finance Manager
424-832-5152 lmassey@sp-apostle.org

Lisa Wellik, Liturgy Coordinator
lwellik@sp-apostle.org

Joung-A Monica Yum, Director of Music
jyum@sp-apostle.org

Priests-in-Residence

Rev. Ted Vierra, CSP
310-689-6210

Rev. Peter Abdella, CSP
310-689-6206

Rev. Steven Bell, CSP
FrSteve@paulist.org

Rev. Ben Chisholm, CSP
bchisholm@paulist.org

University Catholic Center (UCLA)

310-208-5015
uccla.org

Rev. Jamie Baca, CSP
Director

Rev. Ben Chisholm, CSP
Associate Director

The Paulist Fathers

paulist.org

Nazareth House
Rev. Tommy Clerkin, CSP
310-839-2361

St. John of God Retirement Center
Rev. Paul Lannan, CSP

Paulist Productions
paulistproductions.org

Rev. Tom Gibbons, CSP
310-454-0688
tgibbons@paulist.org

Mass Intentions for the Week

Saturday, October 18

8:30 AM Luke Shelton Mendiz
5:00 PM +Marlene, Maria &
Antonio Del Rosario

Sunday, October 19

7:30 AM +Lucy Shiffrin
9:30 AM +Janice M. Rosa
11:30 AM For the People
5:00 PM +Lee Thompson

Monday, October 20

7:00 AM +Juliana Chang Bong
Kang
5:30 PM +Roseline Moore

Tuesday, October 21

7:00 AM +Sr. Stella Maria
Enright, DMJ
5:30 PM Maribel F. Del
Rosario, PhD
(birthday)

Wednesday, October 22

7:00 AM Pope Leo XIV
5:30 PM (birthday)
+Massimo Ludovisi

Thursday, October 23

7:00 AM +Gina Huskey
5:30 PM +Angela & Enrico
Mezetti

Friday, October 24

7:00 AM +Fidelina Rodriguez
5:30 PM +Haruko Hiromura

Saturday, October 25

8:30 AM +Eun Young Park
5:00 PM +Antonio A. Del Rosario

Sunday, October 26

7:30 AM +Gil & Inez Escalante
9:30 AM Walker Kaloski
11:30 AM +Mary Lou Kiene
5:00 PM For the People



Want a mass
said in memory
of a loved one?

Email
parishoffice@sp-apostle.org

Suggested
donation of \$10

**Thank you for your stewardship of
our parish community!**

Week of 10/04/25 - 10/10/25

Online (CC): \$8,518.84

Mass: \$4,821.00

Mail: \$1,665.00

Total: \$15,004.84



Food Pantry Donations

Your donations of rice, beans, vegetable oil, cereals, canned goods, and soups are greatly appreciated and help more than 35 families and others. Bring donations to the foyer of the Parish Office - our foyer doors are normally open daily from 9:00 am - 3:00 pm



Our mission to protect vulnerable adults

Nearly 1 in 4 U.S. adults report living with some kind of disability, ranging from physical limitations to diminished mental capabilities. Misunderstandings and misconceptions about a person's individual disabilities can put that person at risk for abuse. By adopting practices that aim to understand a person's unique circumstances, abilities, and challenges, we can work to protect those who are vulnerable in our communities. Some examples which can help foster safety and community include: asking questions instead of making assumptions, focusing on a person's abilities and using positive language. For more information, read the VIRTUS® article "Our Mission to Protect Vulnerable Adults" at lacatholics.org/did-you-know.

Ministry Groups

STARS

seniorministry@sp-apostle.org
424-832-5156

Music

Dr. Joung-A Yum
jyum@sp-apostle.org

Religious Education

Michelle O'Donnell:
modonnell@sp-apostle.org



Confirmation

Jennifer Kozakowski:
jkozakowski@sp-apostle.org



Altar Servers

Jennifer Kozakowski:
jkozakowski@sp-apostle.org



PALM

palm@sp-apostle.org

**Lectors, Sacristans,
Eucharistic Ministers,
& Ushers**

Lisa Wellik:
ministries@sp-apostle.org



VIA Young Adult Ministry

<https://sp-apostle.org/via>



ST. PAUL THE APOSTLE

Bon Voyage

FESTIVAL 2025

Friday, October 24th, 3pm—9pm

Saturday, October 25th, 12pm—9pm

Sunday, October 26th, 10am—5pm





SPA FESTIVAL IN-FLIGHT SAFETY PROCEDURES

**LADIES AND GENTLEMAN, EXPLORERS OF ALL AGES - WELCOME ABOARD
THE ST. PAUL'S BON VOYAGE FESTIVAL FLIGHT 2025!**

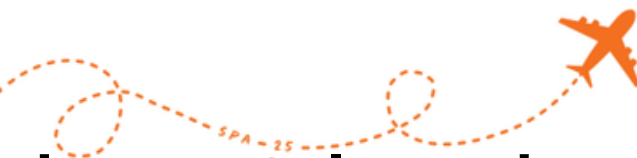
**BEFORE TAKE-OFF FOR OUR TRIP AROUND THE WORLD, YOUR CAPTAINS
AND CREW WOULD LIKE TO REVIEW A FEW QUICK SAFETY PROCEDURES
TO ENSURE A SMOOTH FLIGHT.**

**THIS YEAR, YOU'LL FIND TWO CLEARLY MARKED, BARRICADED
ENTRANCES, ALL CARRY-ON BAGS WILL BE SEARCHED AND TAGGED BY
OUR FRIENDLY CREW. PLEASE ALLOW EXTRA TIME FOR BOARDING THIS
YEAR!**

**ALIGNING WITH THE SAFETY STANDARD FOR LARGE GATHERINGS, SPA
HAS ADOPTED A CLEAR BAG POLICY FOR FESTIVAL. YOU CAN BRING YOUR
OWN CLEAR BAG OF ANY SIZE OR PURCHASE AN OFFICIAL BON VOYAGE
FESTIVAL BACKPACK, TOTE OR FANNY PACK AT SPASPIRITSHOP.COM**

**ON BEHALF OF YOUR ST. PAUL THE APOSTLE FLIGHT CREW - THANK YOU
FOR FLYING WITH US! NOW FASTEN YOUR SEATBELTS, SECURE YOUR
CLEAR BAGS, AND PREPARE FOR TAKE-OFF FOR THE ADVENTURE OF A
LIFETIME!**

Ticket Sales



Festival Tickets on Sale Now!

Buy all your **pre-sale ride** and **booth tickets** online **NOW** at discounted prices! While you are at it, go ahead and make your life easier and buy your **Festival Valet Pass** and **clear bag** too!

Visit spaspiritshop.com to get your **discounted** pre-sale tickets.

Details to remember:

10/22 - Online pre-sale ticket sales end
All sales are final



Oh là là! At this year's festival **Apostles Boutique** is popping-off in the **library!** Look for the Eiffel Tower and get excited for a boutique shopping experience offering carefully selected inventory, permanent jewelry, and more.

Hours:

Friday 3-6pm

Saturday 12-5:30pm

Sunday 10am-3pm



We are looking for **volunteers** to sign up to donate a delectable treat to our **Bake Booth**.

Sign up link below:



All Souls Day *Candles*

Honor the memory of your loved ones this All Souls' Day with a candle that shines in their name.

Each \$20 candle will shine in the church for several days in the beginning of November. Your loved ones will also be honored at our **Requiem Mass on Saturday, Nov. 1st at 5:00pm.**

To Dedicate a Candle

1. Visit sp-apostle.org → **Donate** → **Give One Time.**
2. Select **Light a Candle – 2025.**
3. Write your loved one's name in the notes box to be inscribed on the candle.



Sunday School Volunteers Needed



Bring Joy to Children on Sunday Mornings!

Each Sunday at the 9:30am Mass, our parish offers childcare and a Bible lesson for children 2 years old through Kindergarten. Volunteers assist with toddler care, Bible stories, songs, and crafts. It's fun, meaningful, and just one hour each week!

Contact littleones@sp-apostle.org or scan the QR code below to sign up.



CHILDREN'S LITURGY OF THE WORD

During Liturgy
of the Word at
the 9:30am
mass



DK classroom
under the church



Children - Kinder to 4th Grade

ST. BRENDAN MUSIC MINISTRY

presents

Mozart
REQUIEM

November 7, 2025

7:00pm Concert

doors open at 6:30pm

Light refreshments beginning at 6:00pm

Featuring singers from

St. Brendan, St. Monica, St. Paul the Apostle, & St. Victor

\$20.00 suggested donation

Tickets available at the parish office

